

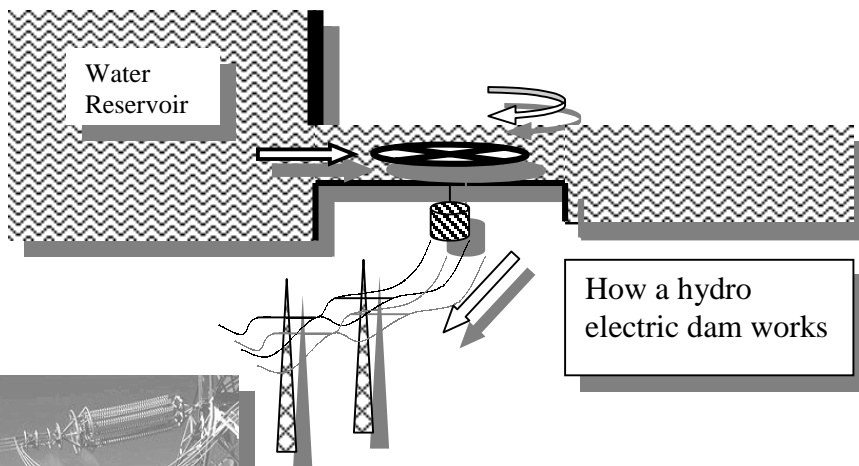
This sample is from the Canadian Shield section

This is another example of additional interesting information given to students in WHY THINGS ARE programs. Note the simple, clear explanations, diagrams and illustrations.

The Waterways: Important rivers in this region include the Churchill, Severn, Winisk, Albany, Moose, and La Grande. This region also extends up to the Northern St. Lawrence River and the Atlantic Ocean. There are many waterfalls in the northern part of the region.

KNOWLEDGE AND SKILLS

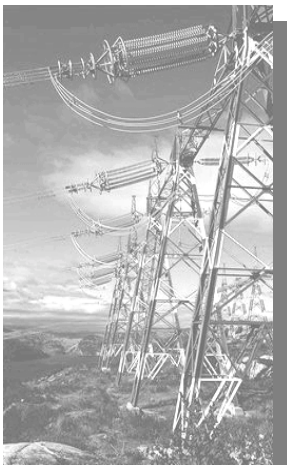
People here have become expert at mining, forest harvesting and producing hydro-electricity. Hydro-electricity uses water dams or water falls. People here also help tourists enjoy water sports, camping, hunting and fishing.



Close-up :

How a hydro electric dam works

Water is accumulated behind a very tall wall. It forms a water reservoir. The water level is much lower after the reservoir. The difference in height causes the water from the reservoir to rush past a turbine, forcing it to turn. The turbine forces an electric coil to turn, creating electricity. The electricity is carried to your house by transmission towers.



Transmission towers



A real hydro dam