

Note that we help the student integrate new knowledge in her daily life with Think Boxes.

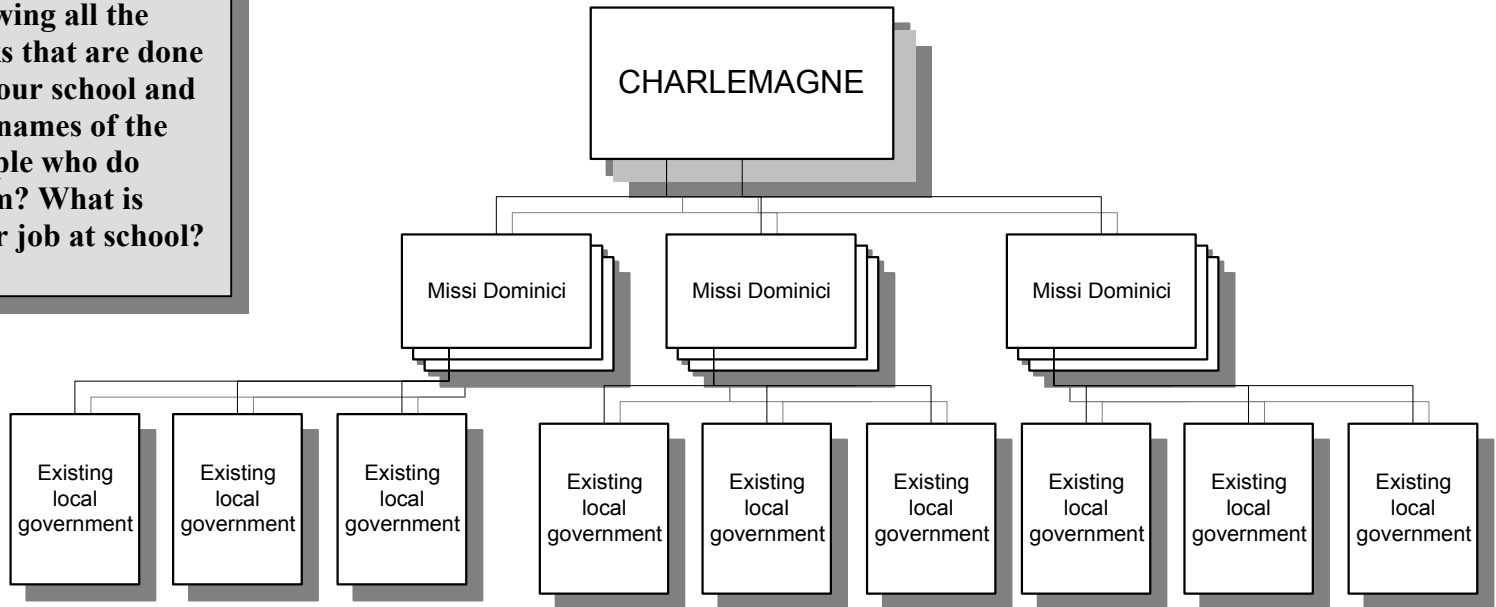
### Think Box:



What is the name of the person who runs your school? Can you draw a diagram such as the one here showing all the tasks that are done in your school and the names of the people who do them? What is your job at school?

How can he run such a big empire? He has a powerful personality and is a great warrior. He is tall and very strong. People respect him. He is also very smart and curious.

He invites Christian monks to his court and they teach him about the Roman ideas of government. He sets up a system of command that looks like this:



The Missi Dominici (which means “those who are sent by the king”) represent the Emperor. They would go and meet with local governments, collect taxes and help with organization and protection of the localities.

Charlemagne tried to create a system of schools in his empire. He thought people should learn how to read. This is why many people sometimes say he invented school.